

DEGREE ATTAINMENT IN FLORIDA

A NEW DATA DASHBOARD BY THE FLORIDA COLLEGE ACCESS NETWORK

FIND LOCAL DATA • VIEW TRENDS • SET GOALS • MEASURE PROGRESS •

MOVE THE NEEDLE

MAKE AN IMPACT



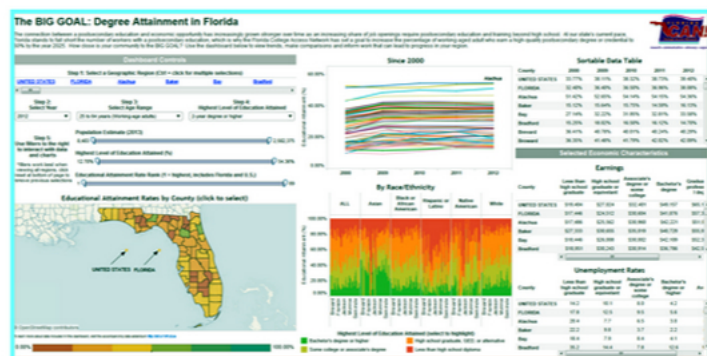
Online data tool reveals degree attainment by age, gender, race/ethnicity at county, state and national levels

Over the past five years, Florida has increased its number of college graduates and certificate holders. To better understand how different communities in the state contribute to this growth rate, the Florida College Access Network has released [Degree Attainment in Florida](#), a new interactive dashboard with accompanying data brief. The online tool allows users to investigate a number of state indicators of postsecondary education levels, sorted by age, gender and race/ethnicity as well as county, state, and national levels.

Currently only 38% of working-age Floridians hold an associate's degree or higher. According to workforce projections by Georgetown University's Center on Education and the Workforce, by 2020 over 60% of Florida jobs will require some form of postsecondary degree or certificate.

Florida Degree Attainment Dashboard

ONLINE TOOL: Find educational attainment data for your local county



DOWNLOAD THE DATA BRIEF

RECENT GAINS, FUTURE CHALLENGES:

A CLOSER LOOK AT DEGREE ATTAINMENT IN FLORIDA



From 2008 to 2013, Florida colleges and universities awarded 57,000 more degrees, certificates

Over the past five years, the number of degrees awarded in Florida increased annually by an average of 5.3%. Driving much of this growth are two-year associate's degrees, thanks to an increase in completions produced by the Florida College System.

FLORIDA GRADS UP 26.5% OVER LAST FIVE YEARS



40.11%
Orlando-Kissimmee-Sanford

39.85%
Miami-Ft. Lauderdale-Pompano Beach

38.15%
Tampa-St. Petersburg-Clearwater

37.6%
Jacksonville

31.83%
Cape Coral-Ft. Myers

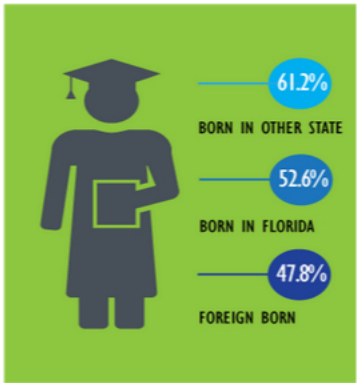
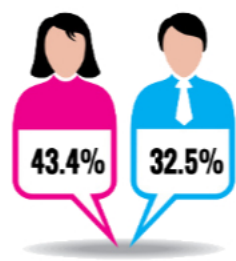
27.87%
Lakeland-Winter Haven

Only one Florida metro area ranks in US top 50 for degree attainment

Eight of the country's largest 100 metro areas are in Florida. Yet only one, (Orlando-Kissimmee-Sanford) barely ranks in nation's top 50 (at 49) for the percentage of residents who hold an associate's degree or higher. A low percentage of college grads impacts a region's ability to attract new businesses and college-educated workers needed to grow the economy.

Women greatly outpace men in earning degrees

In 2000, working-age men and women earned degrees at virtually the same rate of 32%. But by 2012, women ages 25 to 34 had degree attainment rates 10.9% higher (43.4%) than their male peers (32.5%).



Floridians born in other states prop up state's education level

Over the last 40 years, Florida's growth has been fueled by new residents from other states and countries. As of 2012, only 20% of Floridians ages 25 and older were born in Florida; 80% moved here from other states or nations. Of those current Florida residents born out of state, 61.2% have some college or higher. That falls to 52.6% for residents born in Florida. Among those born in other countries, the rate is 47.8%.

Degree attainment by race and ethnicity remains flat

Degree attainment rates for Asians (56%), Whites (41.6%) and Blacks (25.9%) have increased marginally since 2010. Hispanics (31.2%) and Native Americans (25.6%) decreased by 1% during that same time frame.

Degree Attainment Rates by Racial/Ethnic Group (%)

